

ZAPPONE™

MANUFACTURING

**Copper Accent Shingle
Kit
For Bay Window Roofs**



**Installation Guide For
Model ZR-103
Model ZR-104**

*Voir verso instructions
en francais.*

Proudly manufactured in the USA exclusively with
solid copper produced by Hussey Copper, Ltd.

Installation Requirements

Installation of the Accent Shingle requires very few tools: a hammer, tin snips, a straightedge and felt tip marker. If one prefers to use screws as fasteners rather than the nails provided, additional tools and materials required will include: a drill, screwdriver and brass, bronze or copper screws.

Caution

Copper, particularly when trimmed, can be very sharp. Zappone Manufacturing recommends the use of gloves and other precautions to guard against cuts and abrasions. It is assumed that good common sense will be utilized and Zappone is, in no way, responsible for any cuts, abrasions or injuries of any kind, which may result from the installation of this product. Be sure to keep scrap pieces and other sharp objects away from children.

Bay Window Roof Kit Contents

This Kit contains the shingles and accessories required to roof almost every standard bay window manufactured. Some custom windows and those significantly larger, will simply require the purchase of an additional package. If you should find that you need just a few extra pieces, you may order them directly from Zappone Manufacturing.

Note for contractors and distributors: Zappone Manufacturing is capable of producing a kit to specifically fit any window product you may carry or install. Call for details.

Included in this package:

ZR-103 103

45 Accent Shingles (Item 1)
3 Starter Strips (Item 2)
3 J-Channel (Item 3)
2 Continuous Hip Caps (Item 4)
3 Z-Wall Counter Flashings (Item 5)
6 oz. Silicon Bronze Nails

ZR- 104

65 Accent Shingles
4 Starter Strips
4 J-Channels
2 Continuous Hip Caps
4 Z-Wall Counter Flashings
8 oz. Silicon Bronze Nails

Preparation

In new construction, simply install a solid plywood roof deck at the desired pitch. For re-roofing, this product may be installed over existing composition shingles. However, for best results prepare the roof deck by removing any existing roofing, nails and flashing down to the bare deck. (A solid deck is required)

Important Note: The vast majority of bay windows will require only one of each accessory piece per accessory condition. At times, when utilizing the ZR-104 Kit, an accessory condition may require more material than contained in one piece. The ZR-104 Kit contains additional pieces for that purpose. When this need arises, simply measure and cut to length the additional amount of material needed and either butt or notch and overlap the pieces.

Installation

Step 1. Starter Strip and Underlayment

Install the starter strip pieces (Item 2) along the edge of the eaves with the nailing flange resting on the top of the deck. Measure and cut to length, then nail approximately every six to eight inches. (Fig. A) Butt the starter strips together at the hips. (Fig. B) Apply the underlayment (minimum #30 Felt) to cover the entire deck and the nailing flange of the starter strip.

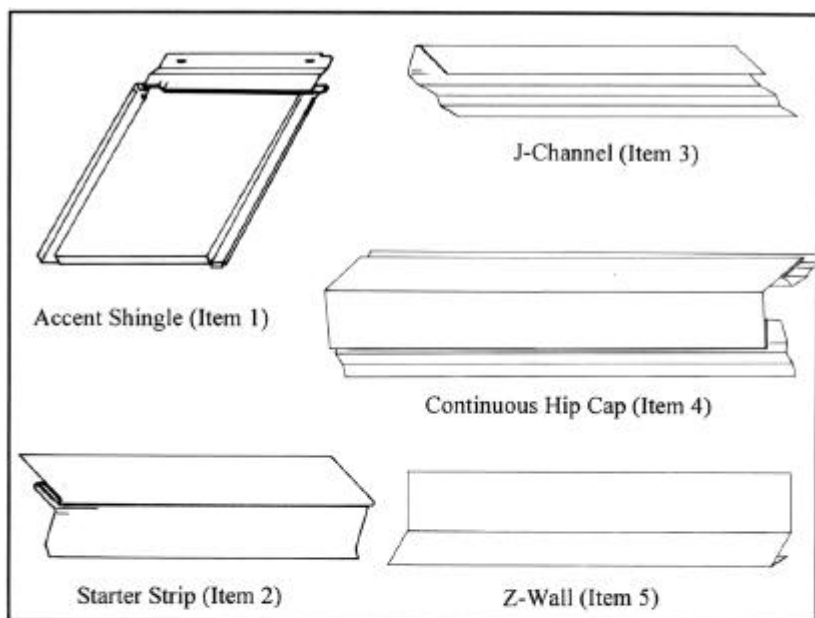


Fig. A.

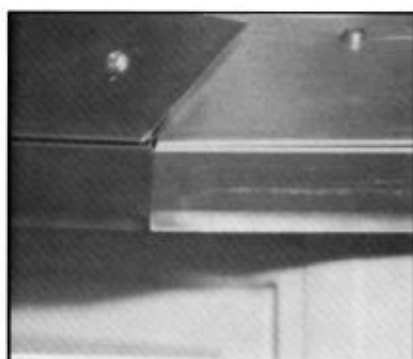


Fig. B.

Step 2. J-Channel and Continuous Ridge

Measure and cut to length the J-Channel pieces (Item 3). The top J-Channel should run from hip to hip. (Fig. C) The side pieces should run from the outer edge of the starter strip (Fig. D.) to the top J-Channel piece (Fig. E). Nail every six to eight inches in the nailing flange outside of the water channel. The J-Channel is produced with the "J" partially open. Do not close that opening at this time.

Measure and cut to length the Continuous Hip pieces (Item 4) so that the center of the lower edge is flush with the outside edge of the Starter Strip (Fig. F) and the upper edge fits inside and against the back of the top J-Channel piece (Fig. G).

To adjust the Continuous Hip to your ridge angle, push down on the "spine" on the top of the piece and install by nailing in the flange of both sides every six to eight inches. (Fig. H)

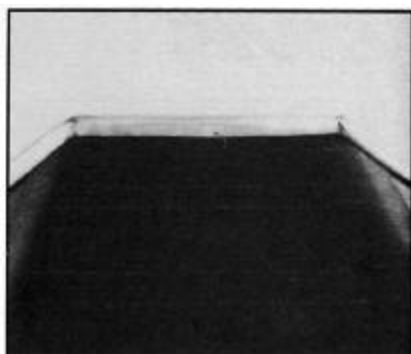


Fig. C.



Fig. D.

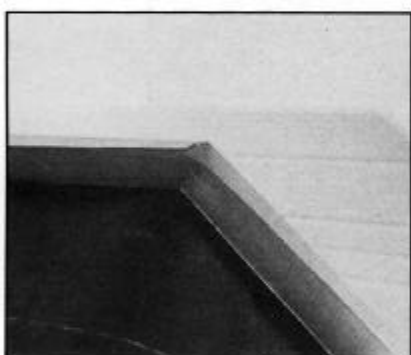


Fig. E.



Fig. F.



Fig. G.



Fig. H.

Step 3. Accent Shingles

Install the Accent Shingles (Item 1) from left to right. Measure and trim the first Accent Shingle (Fig. I and J) at the appropriate angle so that the trimmed edge fits snugly against the back of the side J-Channel and the butt of the shingle locks **firmly** into the Starter Strip (Fig. K). Nail into place.

Place the next and subsequent shingles of the first course into place by sliding the tab on the upper left of each shingle into the slot on the upper right of the adjoining shingle. Firmly lock the butt of the shingle into the starter strip and nail into place.

When the shingles reach the Continuous Hip piece, trim, if necessary, so that the trimmed edges fit snugly into and against the center of the Ridge. (Fig. L and M)

Installing the center portion of the roof is similar to the installation of the side portion. Trim and fit the initial shingle in the Continuous Ridge and proceed as before. When beginning subsequent courses, size the initial shingles so that the “splits” provide a staggered appearance and lock the butt of the shingles firmly into the nailing flange of the shingles on the course below. (Fig. N)

At the final course, trim the shingles to fit snugly into the top J-Channel (Fig. O). After all shingles are installed, using both hands, apply downward pressure on the top of each J-Channel piece to close the opening and position the piece firmly against the shingles. (Fig. P)

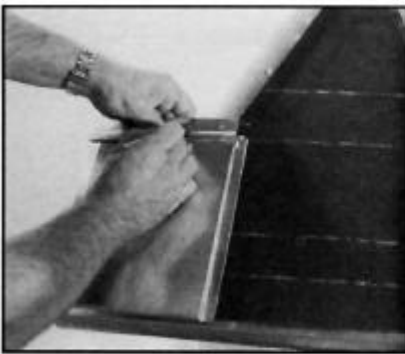


Fig. I.



Fig. J.

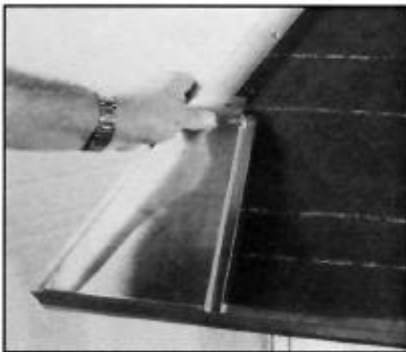


Fig. K.



Fig. L.

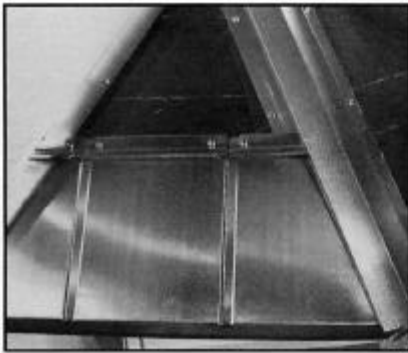


Fig. M.

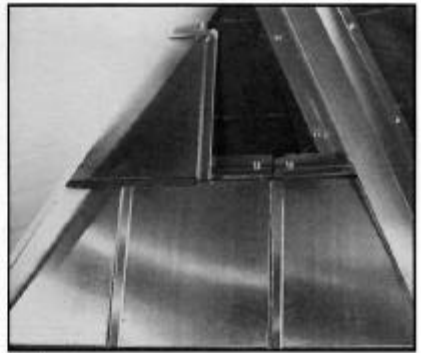


Fig. N.



Fig. O.



Fig. P.

Caulking Versus Counter Flashing

Now that the roof is completed, a decision regarding weather protection should be made. Where it is impossible to fit counter flashing under the building's outer wall material, caulking the area between the J-Channel and wall may be the best choice. However, when possible, it is recommended that the J-Channel be counter flashed with the Z-Wall. (Item 5)

Install the Z-Walls on the side J-Channels first. Fit the piece so that it extends up the wall and beyond the hip to a point where the wall-leg will be covered by the top Z-Wall piece, when installed. (Fig. Q) Mark the center-bend and the return hem directly over the hip point. Cut the center-bend from the end of the piece to the mark (Fig. R) and remove the same length of return hem, creating a small flexible tab. (Fig. S)

Re-position the Z-wall in place, locking the top of the J-Channel into the return-hem. (Fig. T) Fold the tab, which resulted from the above cuts, over the hip point and down on top of the top J-Channel. (Fig. U) Nail in place along the wall-leg of the Z-Wall.

After both side Z-Wall pieces are in place, measure and cut the top Z-wall piece to size, and position so that it locks into the top J-Channel and nail into place. (Fig.V)



Fig. Q.



Fig. R.



Fig. S.



Fig. T.



Fig. U.



Fig. V.

Congratulations

You have installed the World's Finest Roof on your bay window.

Additional Materials

Sometimes, in the course of installation, a piece may be cut incorrectly or somehow damaged. If you find that you need an additional piece, you may order it directly from Zappone Manufacturing

Accent Shingles
Starter Strip
J-Channel
Continuous Ridge
Z-Wall
Bronze Nails

Orders may be placed using a Visa or MasterCard between 8:30am and 4:00pm, Pacific Time, Monday through Friday.

Also Available from Zappone:

Bow Window Roof Kits
Custom Sized Bay Window Roof Kits
Full Size Copper Roofing Shingles
Copper Ridge Caps
Copper Vents
Accelerated Patina Treatment
Copper Preservative Coating



Zappone Manufacturing
N. 2928 Pittsburg St. • Spokane, Washington 99207
509.483.6408 • 800.285.2677 • Fax: 509.483.8050
E-mail: copper@zappone.com • Website: www.zappone.com

Copyright 2000 Zappone Manufacturing • Spokane, Washington • All Rights Reserved
This document is protected against any unauthorized copying, duplication or reproduction in any manner.